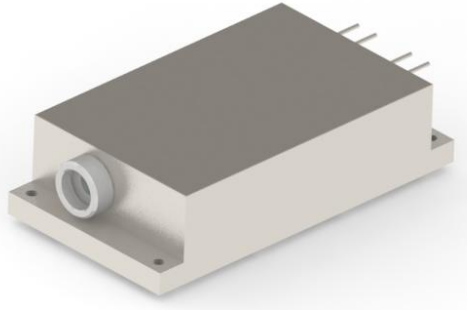
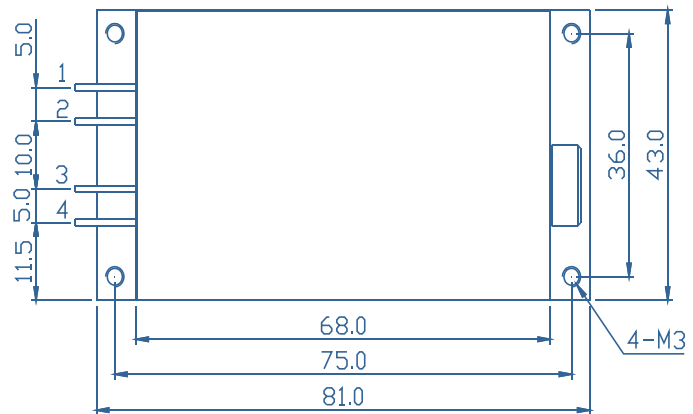
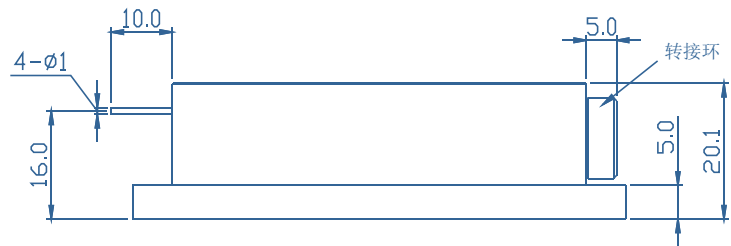
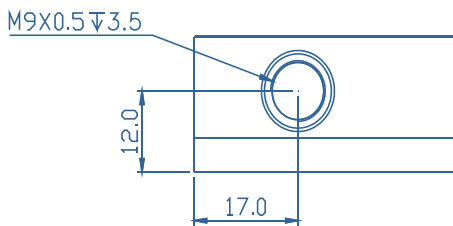


B-Series High Power Laser Diode Module



- Features
- ◆ High output power of 40W
 - ◆ Laser beam collimation output
- Applications
- ◆ Laser Marking
 - ◆ Laser Surface Heat Treatment

Package Dimensions (mm)



Pin-out Assignment	
Pin	Function
1	LD1 (+)
2	LD1 (-)
3	LD2 (+)
4	LD2 (-)

Typical Device Performance (20°C)

	Min	Typical	Max	Unit
Optical				
CW Output Power	-	40.0	-	W
Center Wavelength	-	450±10	-	nm
Spectral Width	-	4.0		
Electrical*				
Threshold Current	-	0.4	-	A
Operating Current	-	3.3	-	A
Operating Voltage (single channel)	-	15.6	-	V
Slope Efficiency (single channel)	-	6.9	-	W / A
Power Conversion Efficiency	-	40.0	-	%
Beam parameters				
Horizontal Spot Size At Window Mirror	-	2.0	-	mm
Horizontal Divergence Angle	-	0.3	°	°
Vertical Spot Size At Window Mirror	-	2.0	-	mm
Vertical Divergence Angle	-	0.3	°	°

*2 groups of LD assembled inside the module, and the operating voltage and slope efficiency of each groups are basically the same.

Absolute Ratings

	Min	Max	Unit
Operating Temperature	15	35	°C
Operating Relative Humidity	-	75	%
Storage Temperature	-20	80	°C
Storage Relative Humidity	-	90	%
Lead Soldering Temperature (10 s max)	-	250	°C

This instruction is for reference only. Han's TCS improves its products continually, therefore may change specifications without notice to customers, for details, please contact with Han's TCS sales.

@2023 Han's TianCheng Semiconductor Co., Ltd. All rights reserved.